

## SureCall Wide Band Outdoor Omni Antenna SC-289W User Guide

- Wide Band (698 – 2700 MHz) Broadband
- 2G/3G/4G and WLAN systems
- Designed for outdoor use only
- Omni-directional antenna 3-4 dB Gain



### Overview

The SC-288W wide band fiberglass antenna is an omni-directional antenna that can receive and send signals from 360° and does not need to be pointed toward a cellular tower. Range of antenna is approximately 30 miles to and from cellular towers free of obstructions.

Besides the antenna itself, parts include mounting equipment for either a flat horizontal surface or a wall. It should be mounted in an upright position for best results.

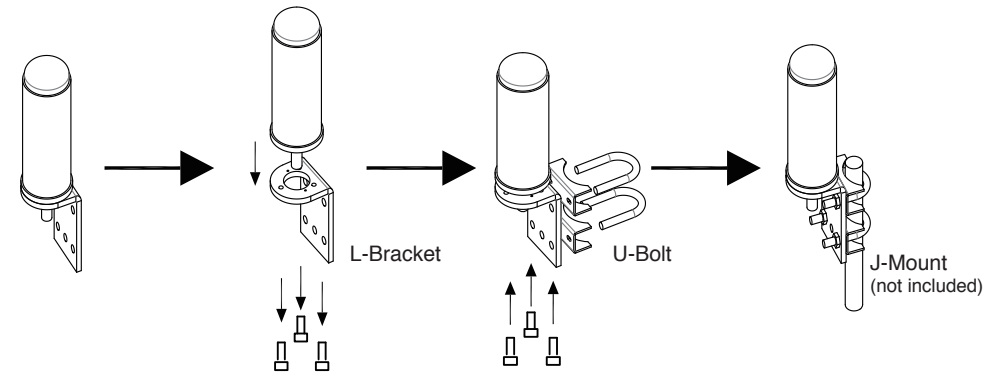
### Installation

Place antenna through the hole on the top of the L-Bracket.

Attached 3 screws through the L-Bracket and into holes on the base of the antenna.

Place the 2 U-bolt ends with the J-Mount (not included) inside, through the U-Bolt base and then through the L-Bracket.

Attach the 3 lock washers to the ends of the U-Bolts on the back of the L-Bracket and tighten with the provided Hex nuts.



### Specifications

|                       |                            |
|-----------------------|----------------------------|
| Frequency             | 698-960 / 1700-2700 MHz    |
| Input Impedance       | 75 Ohm                     |
| Antenna Gain          | 2-3 dBi / 3-4 dBi          |
| VSWR                  | ≤2.0                       |
| Power Rating          | 10 W                       |
| Polarization Type     | Vertical                   |
| Radiation             | Omni-directional           |
| Maximum Power         | 100 Watt                   |
| Connector type        | F-Female                   |
| Dimension             | 9.5" x 3.9"                |
| Color                 | White                      |
| Mount                 | Mounts on the roof or wall |
| Operating Temperature | -22°F to +176°             |
| Beamwidth Groundplane | E:72 H:92/ E:50 H:80       |
| Material              | Fiberglass                 |